

EXHIBIT 3

ALFA NERO

BUILT BY
oceAnco







ALFA NERO

BUILT BY
oceAnco

Alfa Nero

WITH EFFORTLESS PERFORMANCE,
NOWHERE IS BEYOND YOUR REACH.
CRUISE THE MEDITERRANEAN,
CARIBBEAN OR SET OFF FOR A DISTANT
ATOLL. WHENEVER AND WHEREVER
YOU ARRIVE IT WILL SEEM AS IF YOU
ARE A PART OF SOMETHING THAT IS
VERY SPECIAL.

ALFA NERO WAS A LEGEND FROM THE
VERY MOMENT SHE WAS LAUNCHED.

Alfa Nero was built by Oceanco in the Netherlands.

Her stunning black hull presents a distinctive profile.
Her size yields a staggering 1,200 square metres of
interior and exterior space in a layout that is totally
different from any other contemporary yacht.

With so much space and volume, she defies
conventional design.

Freedom to flow is the result. Free-flowing lines
curve into an aft deck, the likes of which has never
been seen before, allowing for an openness in the
manner of a grand villa with a terrace by the sea.

The Interior design defined by modern art set to a
marine theme by one of the world's leading interior
designers is extremely original.

Privacy is paramount. No part of the master suite
is visible from any part of the yacht. Guests and
crew have totally separate spaces. Service is simply
immaculate.





Alfa Service

THE FINEST SERVICE AFLOAT

As anyone who has ever been on a private yacht knows, the difference between a good hotel and a great yacht is the level of service. Alfa Nero's crew is dedicated to one purpose – delivering the finest service afloat.

The prestige of working on this yacht has brought together a team of extraordinary talent, experience and dedication. The captain and crew are people who have worked with the most discerning guests on the finest yachts in the world. Now, they are creating a reputation for excellence on Alfa Nero.

26 crew look after the 12 guests. As there are more highly automated engineering systems on Alfa Nero than on some other private yachts, the crew has more flexibility to be dedicated to guest duties.

The service ethos is built around making guests always feel welcome. Welcome on board, welcome to whatever it is that they want —getting to know preferences for everything from flowers to food and from formality to fun. In essence, what makes each guest feel totally at ease. Food is always fundamental to the enjoyment of any holiday. Alfa Nero's award-winning chef is a master of every cuisine. Vast freezers mean that regardless of location or time of year, whatever a guest likes or the chef needs, is available.

A barbecue on the beach, midnight snack after a film, an Italian lunch, Thai dinner, fresh baked bread, gallery made ice cream, line caught fish or local market produce.

Food for children, vegetarians, meat lovers and those on a diet. Haut cuisine as well as hamburger heaven.

Alfa Nero cuisine – exceptional food in sensational surroundings.





Life under a Big Blue Sky

AN UNIQUE AFT DECK

Alfa Nero's aft deck is like no other superyacht.

Above nearly 300 square metres of deck space is the sky. Glorious, blue sky, orange-streaked sunset sky, star-strewn night sky. The effect is stunning.

Alfa Nero has probably the largest open aft deck in yachting—the perfect place from which to watch the ever-changing seascape.

Arriving by tender at the stern of the yacht, you step aboard a full-width teak platform and are greeted by a waterfall from the infinity edge swimming pool. Wide steps, like something from a grand Palladian mansion, lead up to the 7-metre water-jet pool filled with over 8,300 gallons of either fresh or seawater. Chic black sunbeds and lacquered side tables flank the pool.



ALFA NERO

Via a stunning piece of Oceanco engineering, the pool floor rises and transforms into a helicopter platform or dance floor. The shaded pool club has a wide bar for snacks and twin tables for dining from the buffet or barbecue. A huge U-shaped sofa faces the 42" LCD screen with Crestron controls to summon up films or music. Mist sprays, concealed in overhanging chrome railings, keep guests cool throughout the day.

As night falls, Alfa Nero's aft deck becomes a spectacular party space. The sub-lit pool projects water reflections onto the superstructure. Recessed lights throw beams into the night sky and a mobile mixing desk is connected to powerful external speakers. Son et lumière on your own private yacht.

200 guests could easily party in a space this size. Imagine the layout: sub-sea lights bring fish to the swimming platform, steps lead up to the pool, the cinema, dining area, into the interior dance floor and through to the main saloon. A mind-blowing arena of over 40 metres.

Life on Alfa Nero is like no other.



An Artistic flair

MAIN SALOON

Designers Nuvolari and Lenard planned the main saloon to excel in totally different ways.

From the saloon to the pool deck is an area divided by two sets of glass doors. Guests simply create the space to fit the occasion.

The saloon is a sophisticated, cosy, contemporary lounge with a large plasma screen linked up to the Kaleidescape system. Oversize sofas give this a relaxed, casual atmosphere especially with the grand Playel piano in use.





The height of Luxury

UPPER DECK SALOON

Alfa Nero's full-beam, upper deck salon has a combination of light, colour, style and space that creates a feeling of utter exhilaration.

The design is so startlingly original that most people's reaction is to sit, smile and be totally captivated by this dazzling space.

The salon needs to be taken in context: scene 1 – guests mingle and relax outside on soft white sofas under large umbrellas. Here is the perfect place for sunset cocktails and canapés. Scene 2 – move inside through retracted floor-to-ceiling windows allowing the balmy evening to air-condition the circular dining area. Scene 3 – after dinner, saunter into to the saloon. Alfa Nero's highly sophisticated, Crestron controlled, Kaleidescape entertainment system plays the latest films onto a 65" cinema LCD screen or a HD Projector System both with surround-sound.

After the film, the sound system transforms the saloon into a chic, bohemian nightclub.

And the design theme? The floor has concentric stripes of Macassar and maple, walls have white, lacquered, dimpled paneling and floor-to-ceiling windows extend the entire length of the saloon. Enormous, white sofas and radically designed tables and armchairs, complete Alberto Pinto's vision.

The salon is equally alluring during the day, when sunlight lasers through the huge windows with brilliant beams of white light. This is a wonderful space for guests to use 24 hours a day.



Open the first set of glass doors and the salon connects with a dance area equipped with laser lights, strobe and a screen linked to music DVDs. Armchairs with giant patterned fabrics, gloss Macassar panels inset with air bubble marquetry – this is a scene of wild fun and sensational sophistication.

The stage is set for the Alfa Nero nightclub.

Opening a second set of doors connects the dance floor with the aft deck to create a stunningly gargantuan entertaining space.



The Dining menu

THE DINING SALOONS

Alfa Nero's dining areas are as much about lifestyle as cuisine. Guests can dine inside or on deck, formally or informally, as group, a couple, 'en famille' or even host a huge banquet. The options are as wide as the requirements. Dine and recline – around the bar on the pool deck or while watching a movie in upper saloon cinema. "Whatever you want, wherever you want it", accomplished to the style and standards of an award-winning chef with an immaculate crew.

Alfa Nero has two distinctly different dining saloons. Forward on the main deck are two inter-connected saloons decorated in a style of startling originality.

The first has an intimate table for four suitable for cocktails and canapés, casual dining or a game of cards after dinner.

Retracting goatskin-lined doors open through to the main dining salon.

Bulwarks fold down to provide infinite views through floor-to-ceiling windows. The entire salon is a feast for the eyes: windows, walls and ceiling divided by ebony panels inset with silver leaf squares and herringbone parquet flooring. The dining table is pop art spectacular with metallic circles set within the black lacquer.

Rich and lavish, the salon creates a mood of elegant sophistication – a great evening about to unfold.



Perfectly positioned between the aft terrace and upper deck saloon, a circular table for up to ten guests provides a spectacular view through full height, fully retracting glazed doors. The salon can be opened to the warm evening air or closed an air-conditioned.

Dramatic, dark, wenge floorboards and a circular table contrast against white, lacquered, dimpled paneling and shell-patterned fabrics. The setting is simply stunning.

a Private
World

THE MASTER SUITE

The master suite occupies the entire forward aspect of the upper deck. A self-contained private world, not one single centimeter of the substantial terrace is visible from any other part of the yacht. If the overall lines of Alfa Nero were not so striking, it would seem as if the yacht was designed around the master suite.

A pantograph door effortlessly opens to the outside terrace set out with a Jacuzzi, twin wing-shaped sunbeds, a dining table and curved sofa. Cooling mist sprays out through forward bulwark railings and walk around decks make it entirely possible to follow the sun throughout the day.





Inside the suite, colours are pale, textures are subtle and space is splendidly indulgent. Gaze across the seascape through a semi-circular wall of windows, filtered via a selection of automatic blinds and curtains.

The king-size bed faces a 50" LCD screen with surround-sound. A beautifully crafted breakfast table and sofa are the only other pieces of furniture in this elegant inner sanctum.

The suite continues through a silver-embossed, lacewood architrave to a study, easily converted into an additional double cabin.

Two, grey-flannel marble and cherrywood bathrooms include a steam shower and Jacuzzi. A dressing room and several metres of immaculately arranged floor-to-ceiling wardrobes complete the suite.





Every
guest
is a VIP

SPECIAL VIP SUITE

The lower deck has particularly special VIP suite with direct access to a teak lobby and a wide, square balcony that unfolds over the sea. This beautifully private enclave is often used for yoga or a massage but is equally enticing for breakfast, a quiet read (what an inspiring backdrop!) or as a protected sun terrace.

Twelve guests sleep in superbly comfortable cabins on both the lower and main decks. A glass-enclosed lift glides from the lower to upper decks, past tall, glowing, crystal sculptures and a leather mosaic, lining the circular stairwell. All guest suites are totally private with separate crew lifts and staircases.

Suites are defined by coral patterns that run across everything from bedheads and counterpanes to cushions and lights. The vibrant colours contrast with paneling made up of a latticework of maple, birch and anigre.



FULL-BEAM VIP

On the main deck, the full-beam VIP has a sliding screen enabling the lounge to be converted into an additional single cabin. Twin en-suite bathrooms are thoughtfully planned to combine privacy with practicality.

Two further double cabins and one large twin have a variety of features from walk-in closets to full-width bathrooms with intricately patterned, slate and marble floors.

All cabins have sophisticated entertainment centres linked to the Kalcidescape system with the option of loading each guest's personal DVD film or music preferences.





AN ART GALLERY

Inside and out, Alfa Nero doesn't resemble other yachts. The interior was created by the imagination of Alberto Pinto taking Roy Lichtenstein's Pop Art painting and combining them with sub-sea themes. Into this brilliant cocktail, Pinto summoned the most extrovert of nature's woods. The result is an 82-metre gallery of interior design.

On Alfa Nero, it is quite possible to just sit, relax and be entertained by looking at the furniture and works of art.

Major Lichtenstein lithographs hang in the main and dining saloons, lobbies and the master suite. Fabrics have Matisse's highly stylized graphic leaf design and Pop Art swirls, zig zags, dots and bubbles decorate the entire yacht.

Zebrano and sycamore are alternatively planked to create striped floorboards; Macassar ebony is gloss varnished to provide fabulously rich panelling; maple, birch and anigre are woven into wall tapestries.

A Playel black lacquer grand piano is etched with a white flowing wave pattern and Herve van der Straeten vases echo the theme in glass. Carpets, rugs, floors, armchairs, walls, window frames, seat backs, pillars- Alfa Nero is a gallery that has to be seen to be believed. Instead of something as simple as paintings on a wall, here is an entire art installation from stem to stern.

Designed
by Artists

Inner Beauty

FITNESS, HEALTH & BEAUTY

With 180 degree views through windows, this is one of the most inspiring gymnasiums afloat. The sun deck's health and beauty salon is a sanctuary of wellbeing.

Equipped with a Treadmaster, Lifecycle, Nautilus omnigym, and Powerplate, the gym can be set up inside or on deck. After the work-out, there is a shower, sunbeds and a Jacuzzi pool. An invigorating session may be tiring but it can also be enjoyable.

Alfa Nero is equipped to assess guests' health with crew fully qualified to operate an advanced diagnostic system. The Tempus programme includes assessments of blood pressure, oxygen levels and temperature together with a defibrillator and orthoscopic camera. The system is connected with a real time video link to a medical centre.

After health, there is beauty. Alfa Nero's spa salon has everything necessary for a guest's beauty regime. This is the place to relax and be pampered from head to toe. The sun deck spa – a highly exclusive club.



Seamanship

THE SEA SCENE

For such a large yacht, Alfa Nero makes access to the sea effortlessly easy.

Tenders moor next to the full-beam swimming platform so that transferring aboard is a mere step away.

All of the tenders and sports equipment are held in side garages with gull-wing doors leaving huge expanses of open deck space. The entire aft section is dedicated to the sea scene with gently descending teak steps and platforms. Whether guests want to just sunbathe after a swim, sit, chat, take photos or read, Alfa Nero has the perfect place for it all including swimming, snorkeling or scuba diving.

A non-slip ladder reaches well below sea level and crew are always at the ready to collect your equipment and hand over towels and robes.

Three tenders include a covered, air-conditioned Jan Meyer limousine so that guests arrive ashore in elegant evening clothes with total poise.

For the sporty, there is a Ski Nautique and a Novurania inboard RIB tender. Six sets of full scuba gear, two jet skis, an assortment of tows and dinghies are enough to exhaust even the most dedicated sea-sports enthusiast.





A unique arrival

ADVANCED ENGINEERING

Alfa Nero is 82 metres of exceptional luxury and breathtaking style. New ideas were the result of advanced engineering and a hugely demanding specification.

Silent speed comes from powerful engines. The figures speak for themselves: 20 knots top speed, a 5,500 nautical mile range at 15 knots, less than 50 decibels of sound underway in even heavy seas.

The hull was exhaustively tested at the Dutch hydrodynamic centre for excellence. An exceptionally efficient design and Rolls Royce underway / zero speed stabilizers deliver superb stability.

Alfa Nero's swimming pool is a tour-de-force engineering concept. The pool floor is raised and lowered by giant interlocking bolts so that in any of three modes- pool, helicopter platform or dance-floor, the surface is watertight and fits flush to the surrounding deck —millimetre precision!





Technological Luxury

LIFESTYLE, ENTERTAINMENT AND SECURITY

With only 3.8 metres of draft, the yacht easily cruises over shallow turquoise water, her dynamic global positioning system holding her precisely in the location of the guests' choice.

Lifestyle, entertainment and security all benefit from the latest technology. A nine-terabyte on-demand system stores over 1,000 films and 800 CD's in an ever-increasing library. Playstations can be used in various locations around the yacht and personal iPods can be connected in all cabins and living spaces. Broadband speeds are 50% faster than on most yachts and all decks are set up with WiFi connectivity. Over 600 worldwide newspapers can be printed out and a powerful global television receiver shows a vast number of channels including sport, news and documentaries.

Security at sea or in port comes from a tightly trained crew and 360° thermal imaging cameras with comprehensive recording capability. Alfa Nero was engineered for the complete comfort of her guests both now and into the future.

Specifications



LENGTH OVERALL 82m / 296ft

BEAM OVERALL 14.2m / 46ft

DELIVERED 2007

MAXIMUM SPEED 20 knots

ACCOMMODATION Master suite, office and private exterior deck area with whirlpool, 1 VIP suite with his & her bathrooms, 1 double VIP suite, 1 double guest cabin, 2 twin guest cabins

MATERIAL Steel Hull and Aluminium Superstructure

ENGINE TYPE 2 x 4,680hp / 3,492kW MTU 16V 595 TE 70

FUEL CAPACITY 294,000 litres / 77,667 US gallons

NAVAL ARCHITECT Oceanco / Azure

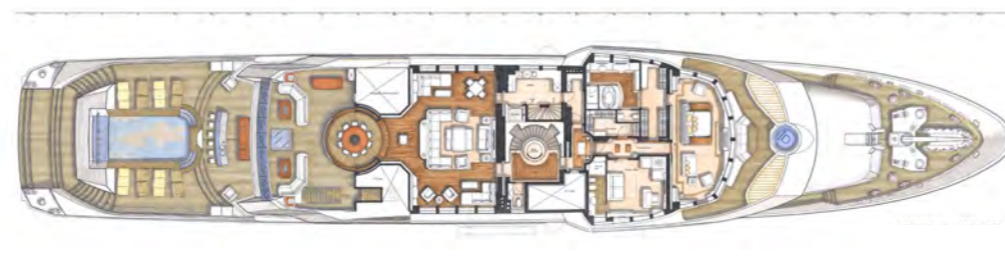
EXTERIOR DESIGNER Nuvolari Lenard

INTERIOR DESIGNER Alberto Pinto

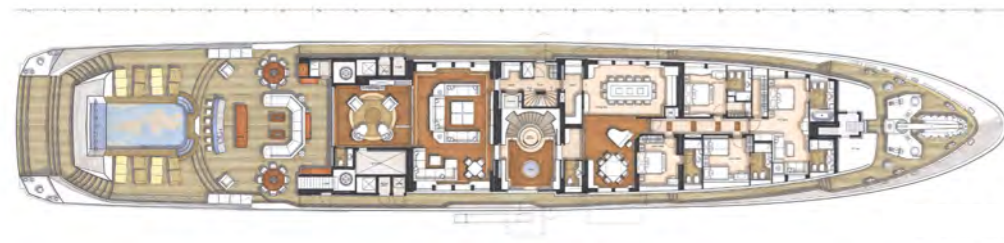
LOWER DECK



UPPER DECK



MAIN DECK



SKYLounge DECK







Awards

ALFA NERO'S OWNER, DESIGNERS AND SHIPYARD HAVE PUT SO MUCH INTO THE YACHT THAT IMPARTIAL ASSESSMENT BECOMES A DIFFICULT TASK.

YACHT AWARDS BRING AN INDEPENDENT VIEWPOINT AND ALFA NERO HAS WON JUST ABOUT EVERY MAJOR AWARD IN THE YACHTING WORLD.

Asia Boating Awards
BEST CUSTOM-BUILT YACHT OVER 150FT
Winner 2010

Boat International
BEST MOTORYACHT INTERIOR
Winner 2008

Boat International
BEST MOTORYACHT EXTERIOR STYLING
Winner 2008

ShowBoats International
BEST FULL DISPLACEMENT MOTORYACHT OVER 75M
Winner 2008

Asia Pacific Boating
MOST INNOVATIVE EXTERIOR YACHT DESIGN OF THE YEAR
Winner 2008

Indian International Boating
BEST MEGAYACHT BUILDER OVER 100FT
Winner 2008

International Superyacht Society
BEST POWER YACHT OVER 65 METRES
Winner 2008

Yachts International
MOST INNOVATIVE CUSTOM MOTORYACHT OVER 40M
Winner 2007





www.builtbyOCEANCO.com

